

HAPPY R-TYPE

LIFTING HEAVY
CARGO FOR
WORLDWIDE
TRANSPORT



GIANT
MARINE

BIG LIFT

HAPPY R-TYPE

HAPPY RIVER, HAPPY ROVER, HAPPY RANGER, ENCHANTER

HATCH OPENINGS AND ALLOWABLE LOADS

HATCH OPENINGS

weather deck	91.0 x 17.7 m
tween deck	87.5 x 17.6 m

ALLOWABLE LOADS

weather deck hatch covers	12.5 t/m ²
tween deck hatch covers	10.5 t/m ²
tank top	20.0 t/m ²

FLOOR SPACE

weather deck	2,450 m ²
tween deck	1,525 m ²
tank top	1,386 m ²

CRANES

2 x 400 mt SWL

COMBINABLE
800 mt

TROLLEY
25 mt SWL

PRINCIPAL DIMENSIONS

Length overall	138.00 m
Length p.p.	127.90 m
Breadth moulded	22.88 m
Summer draft	9.50 m

REGISTRATION

The Netherlands
m.v. Enchanter: Panama

CLASS

Lloyd's X100 A1 XLMC-UMS
LA LNC AA strengthened for heavy cargoes Ice class Finnish/Swedish 1A, Great lakes fitted



MAIN ENGINE

Wärtsilä	8775 kW
Bowthruster	850 kW
Service speed	16.4 kn at draft 7.00 m

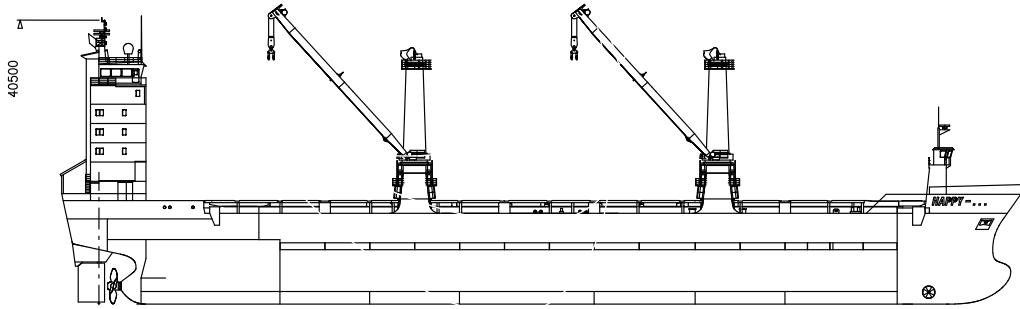
CAPACITY

Grain = bale	17,863 m ³
If tween deck installed	16,338 m ³

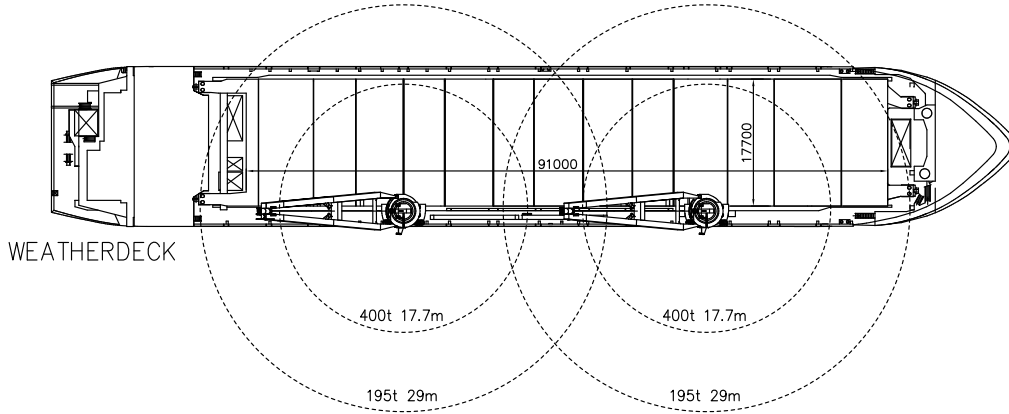
DEADWEIGHT

At Summer (sea water) draft
15,634 mton inc. tween deck hatch covers, pillars

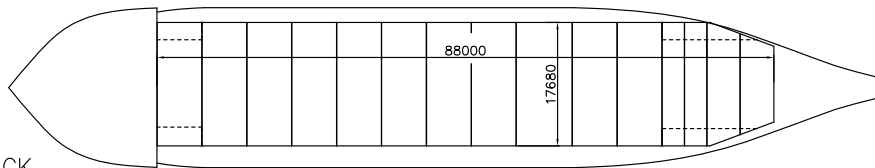
HAPPY R-TYPE



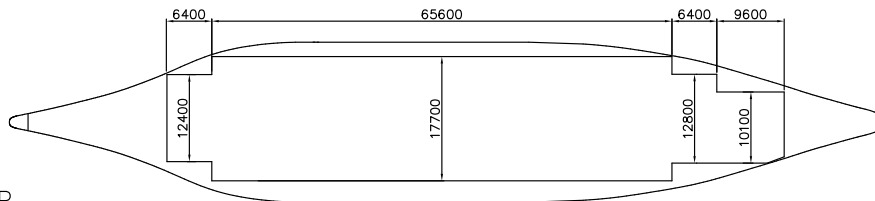
SIDE VIEW



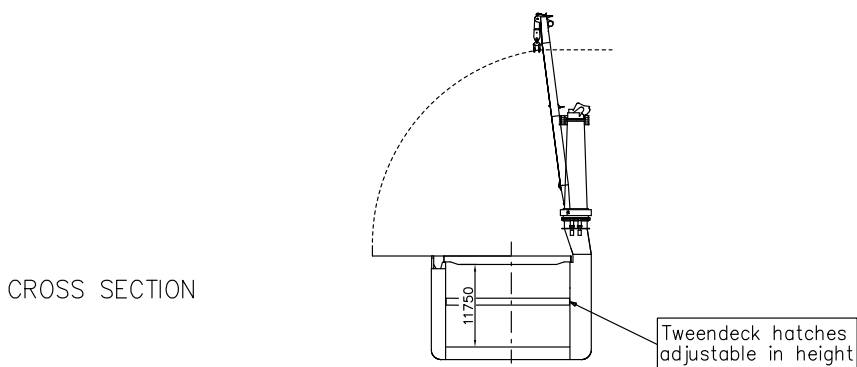
WEATHERDECK



TWEENDECK



TANKTOP



CROSS SECTION

Vessel TC description - m.v. HAPPY RANGER

General				
type of vessel	General Cargo Heavy Lift vessel			
class	Lloyd's 100A1, CG, *1WS, Ice Class 1A PCWBT (Swedish/Finnish), X LMC, UMS, NAV1, strengthened for heavy cargoes, suitable for timber, deck cargoes and containers in hold and on deck.			
built	1998			
flag	Netherlands			
port of registry	Amsterdam			
owner	C.V. Scheepvaartonderneming Happy Ranger, Amsterdam			
P&I club	Standard Steamship Owners' P&I, Bermuda			
official number	19134 ZR 1998			
IMO no.	9139311			
MMSI	24553900			
call sign	P C E R			
satellite number	telex	324553916		
	phone	+870 7648 65622		
	fax	+870 7648 65625		
	mobile	+31 6 5115 2884		
	e-mail	pcer@globeemail.com		
Inmarsat "C"	telex 1	424553910		
	telex 2	424553920		
Tonnage		<u>International</u>	<u>Panama</u>	<u>Suez</u>
GT		10,990	37,698.97 m ³	10,744.19 t
NT		5,041	9,255 ton	8,901.32 t
Measurements				
Length overall	138.04 m			
Length between perpendiculars	127.94 m			
Breadth moulded	22.80 m			
Depth moulded	12.95 m			
Width overall (inc. crane platforms)	23.05 m (inc. 30 seaway fenders)			
Draft Summer (salt)	9.497	m (with w.t. bulkhead)		
Deadweight Summer (salt)	15,590	mton		
Airdraft over keel	40.50 m (cranes down)			
Immersion (average)	26.50 mton / cm			
Floor space weather deck	2,450	m ²		
tween deck	1,525	m ²		
lower hold	1,386	m ²		

<p>Hatches 1 hold, 1 hatch</p> <p>hatch opening to tweendeck hatch opening to lower hold</p> <p>hold heights</p> <p>lower hold heights tween deck heights</p> <p>some tween deck pontoons have limitations on height positions.</p> <p>total hold height</p> <p>Deck strength weather deck partly with stanchions tween deck partly with stanchions</p> <p>tank top</p>	<p>partly folding forward/aft; partly lift away, pontoon / rolling type</p> <p>91 x 17.68 m 88 x 17.68 m</p> <p>adjustable in steps of 50 cm; can be positioned in 13 different heights minimum height in lower hold: 3.425 m maximum height in lower hold: 8.925 m</p> <p>11.75 m</p> <p>4.0 mton/m² 12.5 mton/m² 3.5 mton/m² 10.5 mton/m² 20.0 mton/m²</p>
<p>Cargo facilities Cranes position frame 116</p> <p>frame 62</p> <p>both cranes are equipped with a trolley</p>	<p>starboard side</p> <p>400 mton SWL at 18.00 m to 195 mton SWL at 29.00 m 400 mton SWL at 18.00 m to 195 mton SWL at 29.00 m</p> <p>37.5 mton SWL</p>
<p>Lifting beams capacity / own weight</p>	<p>1 x 800.0 mton SWL / 18.0 mton 1 x 400.0 mton SWL / 14.0 mton</p>
<p>Mechanical details mechanical ventilation CO₂ power supply reefer plugs</p>	<p>15 air changes per hour yes 440 volts, 60 Hz up to 800 kW</p>
<p>Tank capacities ballast fresh water HFO MGO Lub oil</p>	<p>5,995.00 cbm 285.00 cbm 1,257.00 cbm 181.00 cbm 56.00 cbm</p>

Speed/Consumption													
Speed through water with fuel consumption (inc. shaft generators) basis HFO 380 centistokes RMG 35; wind not exceeding 2 beaufort; calm smooth sea without current:													
Fuel consumption per day in mtons (even keel)	abt. 15.4 knots at abt. 30 ton/day abt. 16.4 knots at abt. 36 ton/day												
In port:	abt. 2.0 ton MGO-DMA per day, cargo gear working abt. 1.5 ton MGO-DMA per day, cargo gear idle												
Engine	Wärtsilä Type 9L 46B												
type	8775 kW, 500 rpm												
bow thruster capacity	850 kW												
ballast pumps, capacity	2 at 750 m; per hour												
Cargo space													
grain	17,863 cbm If tweendeck installed -1525m;												
bale	17,863 cbm												
	<table border="1"> <thead> <tr> <th>TEU</th> <th>FEU</th> <th>+TEU</th> </tr> </thead> <tbody> <tr> <td>683</td> <td>298</td> <td>66</td> </tr> <tr> <td><u>356</u></td> <td><u>159</u></td> <td><u>38</u></td> </tr> <tr> <td><u>1,039</u></td> <td><u>457</u></td> <td><u>+ 104</u></td> </tr> </tbody> </table>	TEU	FEU	+TEU	683	298	66	<u>356</u>	<u>159</u>	<u>38</u>	<u>1,039</u>	<u>457</u>	<u>+ 104</u>
TEU	FEU	+TEU											
683	298	66											
<u>356</u>	<u>159</u>	<u>38</u>											
<u>1,039</u>	<u>457</u>	<u>+ 104</u>											
container capacity deck													
hold													
(up to visibility IMO line)													
stackloads deck	60 90 tons												
tweendeck	120 144 tons												
lower hold	120 144 tons												
Remarks:	heights upto 9'6": limited space for 45' containers												
Vessel is fully equipped													
Vessels is partly self-sustained.													

All details are approximate and without guarantee.

GIANT MARINE

General Agents for BigLift Shipping B.V
3 rue du Maréchal de Lattre de Tassigny
78150 LE CHESNAY
Tel: 01.39.63.37.37
Fax: 01.39.55.81.49
Email: info@giantmarine.com

Mic: **M. Gilles THOMAS**
Email: thomas@giantmarine.com

Mic: **M. Paul-Henri TANON**
Email: tanon@giantmarine.com