

HAPPY R-TYPE

LIFTING HEAVY
CARGO FOR
WORLDWIDE
TRANSPORT



GIANT
MARINE

BIGLIFT

HAPPY R-TYPE

HAPPY RIVER, HAPPY ROVER, HAPPY RANGER, ENCHANTER

HATCH OPENINGS AND ALLOWABLE LOADS

HATCH OPENINGS

weather deck	91.0 x 17.7 m
tween deck	87.5 x 17.6 m

ALLOWABLE LOADS

weather deck hatch covers	12.5 t/m ²
tween deck hatch covers	10.5 t/m ²
tank top	20.0 t/m ²

FLOOR SPACE

weather deck	2,450 m ²
tween deck	1,525 m ²
tank top	1,386 m ²

CRANES

2 x 400 mt SWL

COMBINABLE
800 mt

TROLLEY
25 mt SWL

PRINCIPAL DIMENSIONS

Length overall	138.00 m
Length p.p.	127.90 m
Breadth moulded	22.88 m
Summer draft	9.50 m

REGISTRATION

The Netherlands
m.v. Enchanter: Panama

CLASS

Lloyd's X100 A1 XLMC-UMS
LA LNC AA strengthened for heavy cargoes Ice class Finnish/Swedish 1A, Great lakes fitted



MAIN ENGINE

Wärtsilä	8775 kW
Bowthruster	850 kW
Service speed	16.4 kn at draft 7.00 m

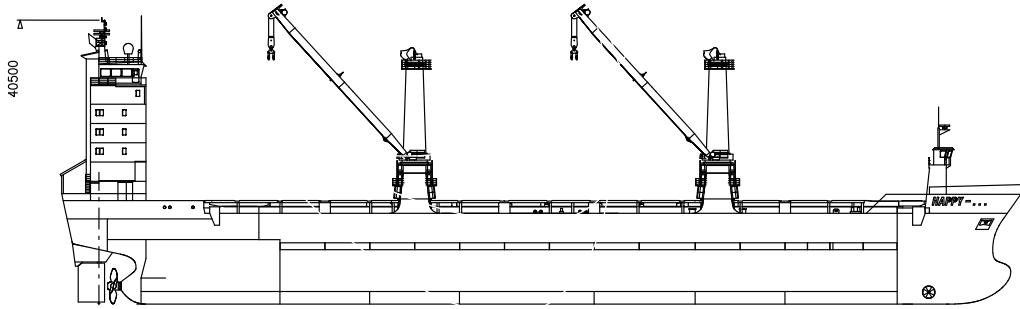
CAPACITY

Grain = bale	17,863 m ³
If tween deck installed	16,338 m ³

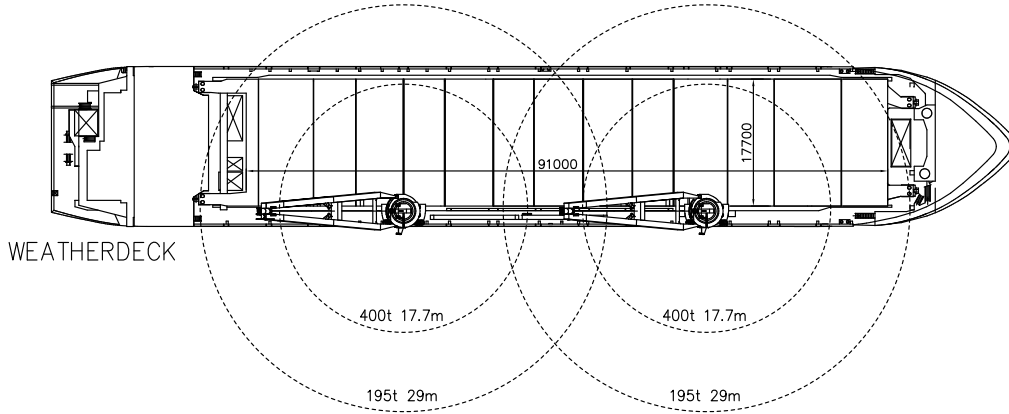
DEADWEIGHT

At Summer (sea water) draft
15,634 mton inc. tween deck hatch covers, pillars

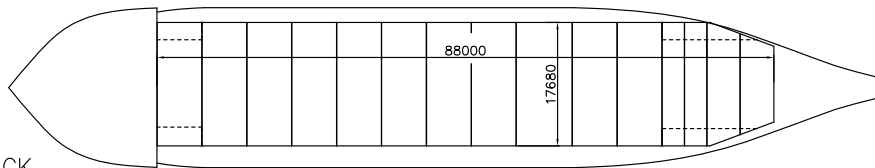
HAPPY R-TYPE



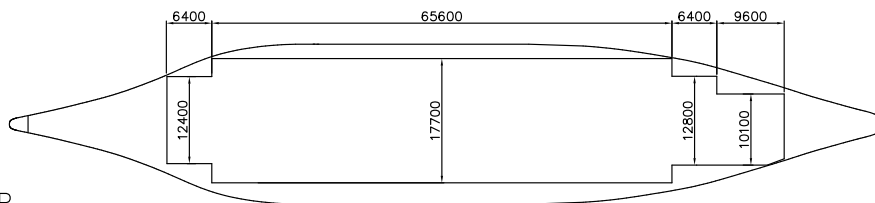
SIDE VIEW



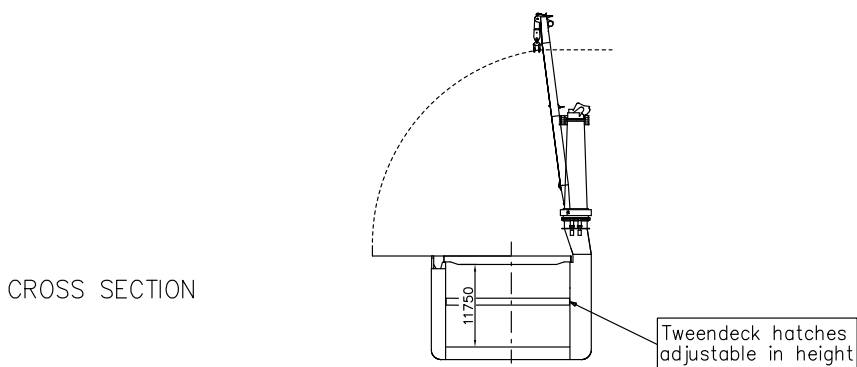
WEATHERDECK



TWEENDECK



TANKTOP



CROSS SECTION

Vessel TC description - m.v. HAPPY ROVER

General				
Type of vessel	General Cargo Heavy Lift vessel			
Class	Lloyd's 100A1, CG, *1WS, Ice Class 1A PCWBT (Swedish/Finnish), LMC, UMS, NAV1, strengthened for heavy cargoes, suitable for timber deck cargoes and container in hold and on deck.			
Built	1997			
Flag	Netherlands			
Port of registry	Amsterdam			
Owner	C.V. Scheepvaartonderneming Happy Rover, Amsterdam			
P&I club	Standard Steamship Owners' P&I, Bermuda			
Official number	19045 ZR 1997			
IMO no.	9139309			
MMSI	245394000			
Call sign	P C B Z			
Satelite number	telex	32453916		
	phone	+870 3245 39410 / 2		
	fax	+870 3245 39415		
	mobile	+31 6 5115 2977		
	e-mail	pcbz@globeemail.com		
Inmarsat "C"	telex 1	424539410		
	telex 2	424539420		
Tonnage		<u>International</u>	<u>Panama</u>	<u>Suez</u>
GT	10,990			
NT	5,041	PC/UMS 10,151	-	10,094.10
Measurements				
Length overall	138.04	m		
Length between perpendiculars	127.94	m		
Breadth moulded	22.80	m		
Depth moulded	12.95	m		
Width overall (inc. crane platforms)	23.05	m (inc. 30cm seaway fenders)		
Draft Summer (salt)	9.50	m		
Deadweight Summer (salt)	15,593	mton		
Airdraft over keel	40.50	m (cranes down)		
Immersion (average)	26.50	mton / cm		
Floor space weather deck	2,450	m ²		
tween deck	1,525	m ²		
lower hold	1,386	m ²		

<p>Hatches 1 hold, 1 hatch</p> <p>hatch opening to tweendeck hatch opening to lower hold</p> <p>hold heights lower hold heights tween deck heights</p> <p>some tween deck pontoons have limitations on height positions.</p> <p>total hold height</p> <p>Deck strength weather deck partly with stanchions tween deck partly with stanchions tank top</p>	<p>partly folding forward/aft; partly lift away pontoon / rolling type.</p> <p>91 x 17.68 m 88 x 17.68 m</p> <p>adjustable in steps of 50 cm; can be positioned in 13 different heights minimum height in lower hold: 3.425 m maximum height in lower hold: 8.925 m</p> <p>11.75 m</p> <p>4.0 mton/m² 12.5 mton/m² 3.5 mton/m² 10.5 mton/m² 20.0 mton/m²</p>
<p>Cargo facilities Cranes position frame 116 frame 62</p> <p>both cranes are equipped with a trolley</p>	<p>Starboard side 400 mton SWL at 18.00 m or 195 mton SWL at 29.00 m 400 mton SWL at 18.00 m or 195 mton SWL at 29.00 m</p> <p>37.5 mton SWL</p>
<p>Lifting beams capacity / own weight</p>	<p>1 x 800.0 mton SWL / 18.0 mton 1 x 400.0 mton SWL / 14.0 mton</p>
<p>Mechanical details mechanical ventilation CO₂ power supply reefer plugs</p>	<p>15 air changes per hour yes 440 volts, 60 Hz up to 800 kW</p>
<p>Tank capacities ballast fresh water HFO MGO Lub oil</p>	<p>5,995.00 cbm 285.00 cbm 1,257.00 cbm 181.00 cbm 48.00 cbm</p>

